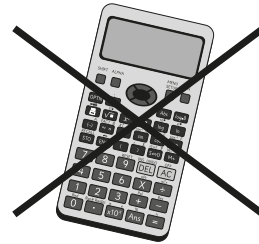


Mathematics

Paper 1 (Non-Calculator) Foundation Tier



Surname

Other names

You should have:

A pen, pencil, ruler and an eraser.

Tracing paper may be used.

Information

- The total mark for this paper is 50
- The marks for each question are shown in brackets.
- Answer all questions in the spaces provided – *there may be more space than you need.*
- You must show all your working.
- Diagrams are not accurately drawn, unless otherwise indicated.
- Calculators may not be used.
- Check your answers if you have time at the end.

1 Write the numbers in order of size, starting with the smallest number.

0.6

0.05

0.57

0.352

(1 mark)

2 Write 0.4 as a percentage.

(1 mark)

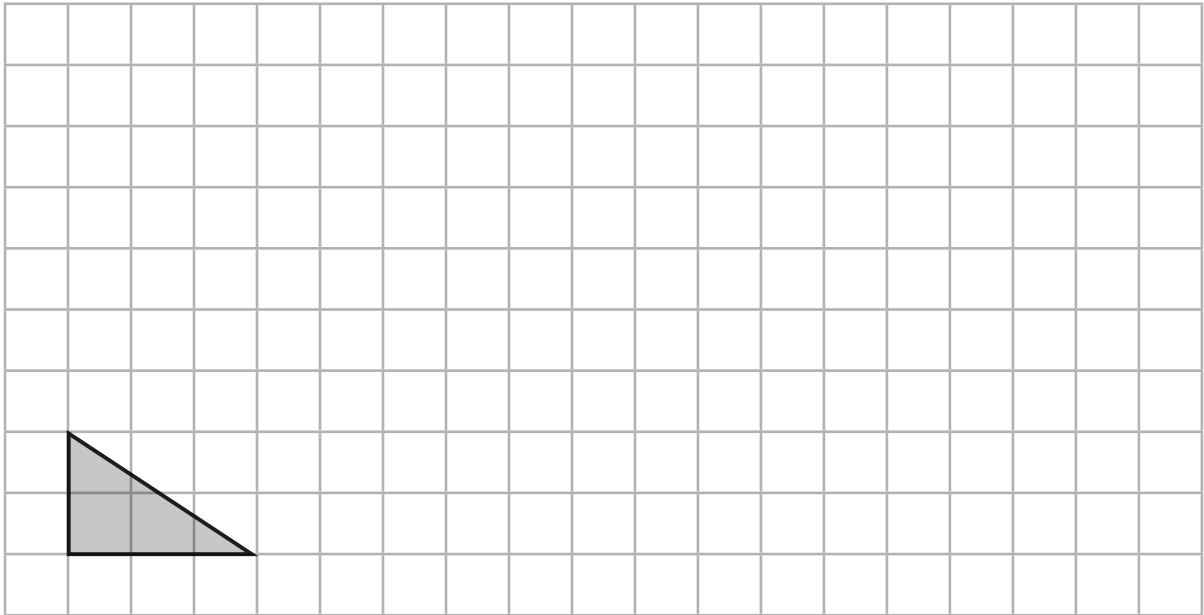
3 Round 3478 to the nearest 10

(1 mark)

4 Write all the factors of 12

(2 marks)

5 On the grid draw an enlargement of the shaded shape with scale factor 3



[2 marks]

6 Mo buys:

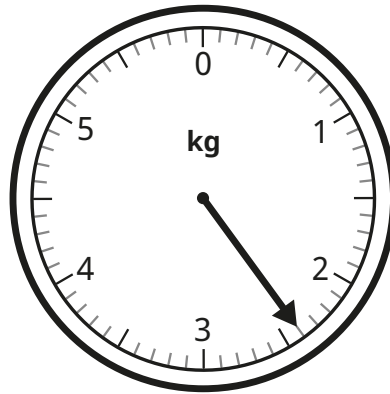
- 4 stamps at 65p each
- 2 greetings cards at 89p per card
- 1 pack of envelopes at £1.09

He pays with a £10 note.

Work out how much change Mo should receive.

(3 marks)

7



a) Write the mass shown on the scale.

_____ (1 mark)

b) Convert 4.7 kg to grams.

_____ (1 mark)

8 Solve the equations.

a) $\frac{m}{5} = 10$

_____ (1 mark)

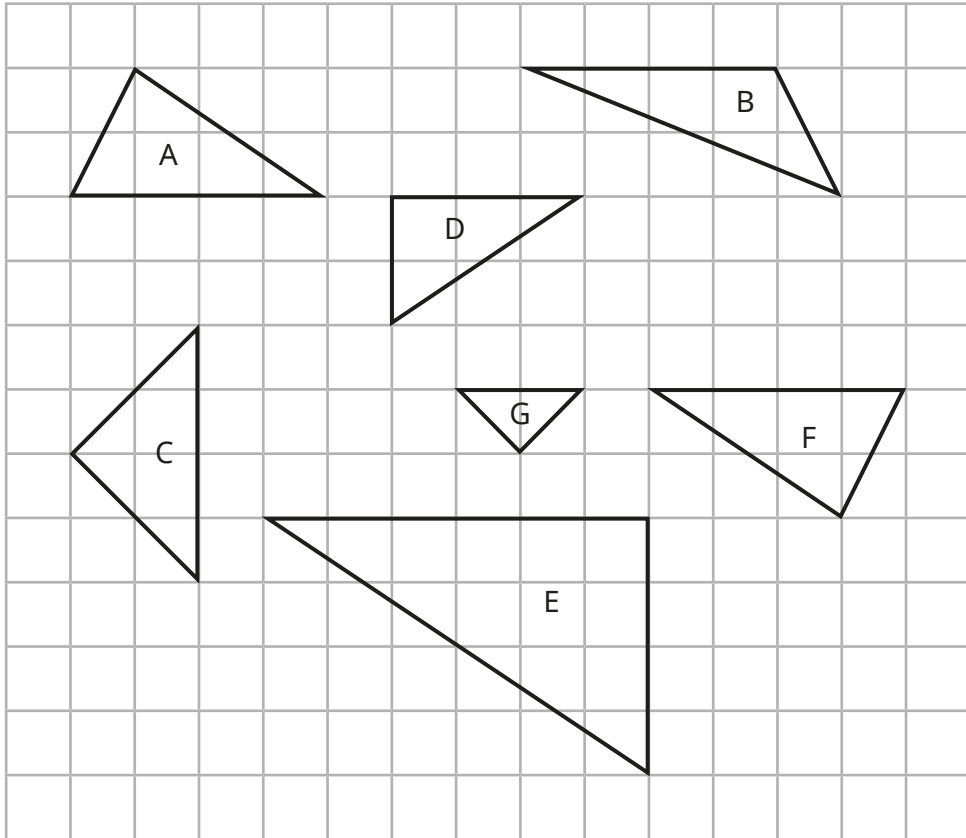
b) $4 + t + 3 = 19$

_____ (1 mark)

c) $4g - 20 \geq 60$

_____ (2 marks)

9



a) Write the letter of an isosceles triangle.

_____ (1 mark)

b) Write the letters of two triangles that are congruent.

_____ (1 mark)

c) Write the letters of two triangles that are similar.

_____ (1 mark)

d) The triangles are drawn on a centimetre-squared grid.
Work out the area of triangle E.

_____ (1 mark)

10 Alex rolls a 6-sided dice ten times.

Here are her scores.

3 2 4 6 3 6 1 2 5 4

a) Work out the median of her scores.

(2 marks)

b) Work out the mean of her scores.

(2 marks)

c) Work out the range of her scores.

(1 mark)

11 Work out 273×2.15

You must show all your working.

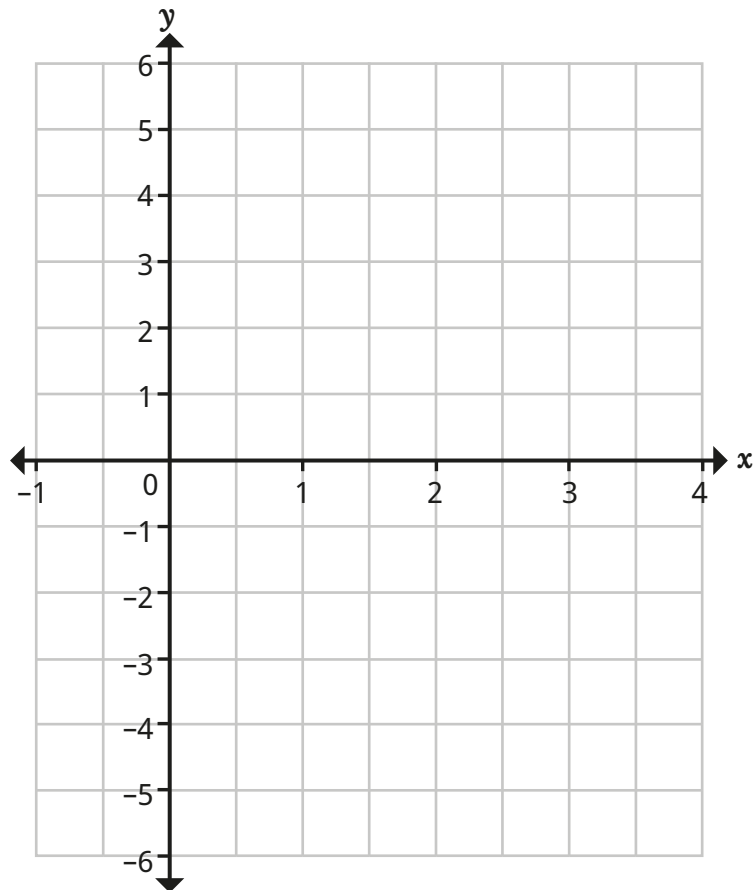
(3 marks)

12 a) Complete the table of values for $y = 2x - 3$

x	-1	0	1	2	3	4
y		-3			3	

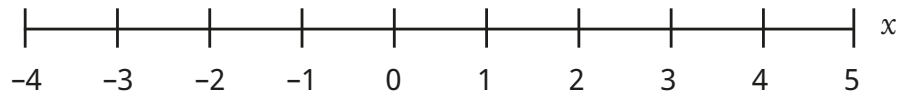
(2 marks)

b) On the grid, draw the graph of $y = 2x - 3$



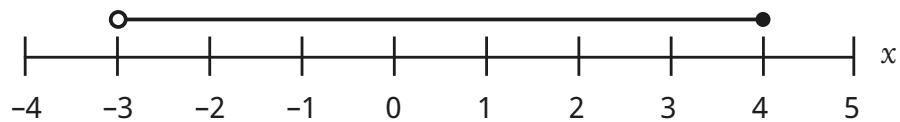
(2 marks)

13 a) On the number line, show the inequality $x \geq -2$



(1 mark)

b) Here is an inequality, in x , shown on a number line.



Write the inequality.

(2 marks)

c) $-2 \leq y < 5$

Write the possible integer values of y .

(2 marks)

14 Tommy and Annie are given some money.

They share it in the ratio 2 : 7

Annie receives £100 more than Tommy.

How much money are they given in total?

(3 marks)

15 Which of these is the value of $\sin 60^\circ$?

Circle your answer.

$$\frac{1}{2}$$

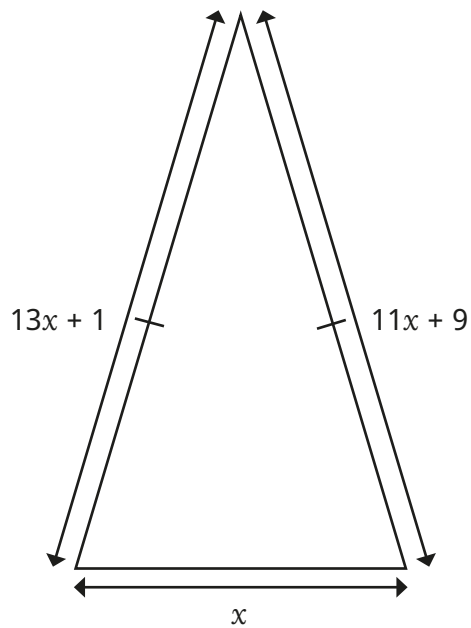
$$\frac{\sqrt{2}}{2}$$

$$\frac{\sqrt{3}}{2}$$

1

(1 mark)

16



a) Explain why $13x + 1 = 11x + 9$

(1 mark)

b) Solve $13x + 1 = 11x + 9$

_____ (2 marks)

c) Use your answer to part b) to work out the perimeter of the triangle.

_____ units (2 marks)

17 Solve the simultaneous equations.

$$3x + 2y = 4$$

$$4x + 5y = 17$$

$x =$ _____

$y =$ _____

(4 marks)